

Iplex Pipelines NZ Limited Product Range

SUPERTUFF

PVC SEWER AND DRAIN PIPE

IPLEX CHANNEL

SURFACE WATER DUCTING SYSTEM

UPVC DRAIN WASTE & VENT SYSTEMS

UPVC PRESSURE SYSTEMS

UPVC STORMWATER SYSTEMS

RAINWATER SYSTEMS

UPVC SPOUTING AND DOWNPIPE

POLIPLEX BLACK'n'BLUE

MDPE PRESSURE PIPE

REDLINE

MEDIUM DENSITY POLYETHYLENE PIPE

GREENLINE

FLEXIBLE MEDIUM DENSITY POLYETHYLENE PIPE

NOVAFLO & NOVACOIL

LAND DRAINAGE SYSTEMS

EFFLUENT PIPE

MEDIUM DENSITY POLYETHYLENE PIPE

IPLEX LD TUBE

LOW DENSITY POLYETHYLENE PIPE

FARMTUFF EXTRA

UPVC CULVERT PIPE

LAND DRAIN

UPVC SLOTTED LAND DRAINAGE PIPE

RHINO

MPVC PRESSURE PIPE

BLUELINE

MDPE PRESSURE PIPE & COMPRESSION FITTINGS (20-63mm range)



Connections made easy

iplex

Pipelines

BLUELINE

MDPE PRESSURE PIPE & COMPRESSION FITTINGS (20-63mm range)



Connections made easy



iplex

Pipelines

Iplex Pipelines NZ Limited.

67 Malden Street, Private Bag 11 019, Palmerston North, New Zealand.
Telephone (06) 356 2004 Fax (06) 356 2906

SALES OFFICES AT:

22 Braeburn Drive, Christchurch, New Zealand, PO Box 16 225, Sockburn.
Fax (03) 349 6485

10 -14 Patiki Road, Avondale, Auckland, New Zealand, PO Box 71 060, Rosebank.
Telephone (09) 828 0717 Fax (09) 828 0725

BLU008

IPLEX BLUELINE Connections made easy

BLUELINE is made from metric sized, flexible, medium density polyethylene to international standards. Iplex BLUELINE is a reliable, economical system which maintains a consistent pressure rating across a wide range of sizes. A popular material for urban water supplies, MDPE is lightweight, strong and flexible.

Excellent Reasons to Specify BLUELINE...

Iplex BLUELINE transports greater volumes of water more efficiently and offers improved performance under pressure. BLUELINE is:

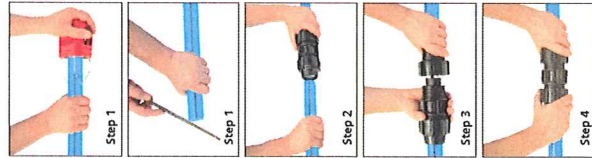
- Efficient
- Flexible
- Compatible
- Versatile
- Durable
- Economical

BLUELINE Pressure Pipe Range

20mm-63mm OD
(15-50mm nominal bore)
12.5 Bar rating

Code Explanation	Pressure Class
Product Code 2500.20PN12.5.50	OD (mm)
2500.20PN12.5.50	Coil Length (metres)

25 metre COILS	50 metre COILS	100 metre COILS
Ordering Code 2500.20.PN12.5.50	Ordering Code 2500.20.PN12.5.100	Ordering Code 2500.20.PN12.5.100
2500.25.PN12.5.50	2500.25.PN12.5.100	2500.32.PN12.5.100
2500.32.PN12.5.50	2500.32.PN12.5.100	2500.40.PN12.5.100
2500.50.PN12.5.50	2500.50.PN12.5.100	2500.63.PN12.5.100



BLUELINE ASSEMBLY INSTRUCTIONS FOR 20mm-63mm OD COMPRESSION FITTINGS

Before assembling the fittings, ensure:

- that the pipe end to be inserted into the fitting is free of scratches and other imperfections.
- that both the pipe end and the fitting itself are free of sand, soil, mud, stones, etc.

Step 1

Cut the pipe to the required length. Chamfer the pipe end using either the multi-size chamfering tool or a pipe rasp.

Step 2

Separate the parts of the fitting and mount them on the pipe: first the backing nut, then the split ring. Locate the conical split ring near the end of the pipe, ensuring that the smaller end is facing the nut.

Step 3

Twist the pipe into the fitting body until it passes through the 'O' ring and 'bottoms out' on the interior step of the fitting body. The twisting action pushes the split ring along the pipe and correctly positions it against the fitting body.

NOTE: A good quality pipe lubricant applied to both the pipe end and the 'O' ring, particularly on the larger sizes, will ease assembly. A screwdriver or pen body can be used to spread the split ring if it needs to be moved.

Step 4

Screw the backing nut very firmly hand tight.

Disassembly

Simply reverse the above steps. There is no need to replace the split ring unless disassembly occurs frequently.

BSP Threaded Connections

Pipe thread tape must be used on all BSP threaded connections in your BLUELINE system.

2501 90° ELBOW
Ordering Code 2501.20.15
2501.25.15
2501.32.15
2501.40.15
2501.50.15

2503 FEMALE THREADED TEE
Ordering Code 2503.20.15
2503.25.15
2503.32.15
2503.40.15
2503.50.15

2504 90° TEE
Ordering Code 2504.20.15
2504.25.15
2504.32.15
2504.40.15
2504.50.15

2505 REDUCING TEE
Ordering Code 2505.20.15
2505.25.15
2505.32.15
2505.40.15
2505.50.15

2506 FEMALE THREADED ADAPTOR
Ordering Code 2506.20.15
2506.25.15
2506.32.15
2506.40.15
2506.50.15

2507 90° MALE THREADED ELBOW
Ordering Code 2507.20.15
2507.25.15
2507.32.15
2507.40.15
2507.50.15

2508 90° FEMALE THREADED ELBOW
Ordering Code 2508.20.15
2508.25.15
2508.32.15
2508.40.15
2508.50.15

2510 COUPLING
Ordering Code 2510.20
2510.25
2510.32
2510.40
2510.50

2513 MALE THREADED ADAPTOR
Ordering Code 2513.20
2513.25
2513.32
2513.40
2513.50

2516 NIPPLE
Ordering Code 2516.15
2516.25
2516.32
2516.40
2516.50

2517 REDUCING THREADED BUSH
Ordering Code 2517.20.15
2517.25.15
2517.32.15
2517.40.15
2517.50.15

2518 REDUCING NIPPLE
Ordering Code 2518.20.15
2518.25.15
2518.32.15
2518.40.15
2518.50.15

2519 THREADED BRANCH SADDLE
Ordering Code 2519.20.15
2519.25.15
2519.32.15
2519.40.15
2519.50.15

MECHANICAL SWIVEL TEE
Ordering Code 2519.20.15
2519.25.15
2519.32.15
2519.40.15
2519.50.15

2523 REDUCING COUPLING
Ordering Code 2523.20.15
2523.25.15
2523.32.15
2523.40.15
2523.50.15

2530 PLUG ADAPTOR
Ordering Code 2530.20
2530.25
2530.32
2530.40
2530.50

2537 THREADED PLUG
Ordering Code 2537.20
2537.25
2537.32
2537.40
2537.50

COMPRESSION STOPCOCK
Ordering Code 2541.20
2541.25
2541.32
2541.40
2541.50

Before using any one of the information on this brochure you should refer to the appropriate code and standards and any applicable local regulations. The information on this brochure is for reference only. It does not constitute a contract. The user assumes all responsibility for the proper use of the information. The user assumes all responsibility for the proper use of the information. The user assumes all responsibility for the proper use of the information.

BLUELINE

Pipe installation

BLUELINE pipes are not suitable for use:

- 1 As a conductor used for earthing electrical appliances.
- 2 In all fire rated applications.
- 3 For continuous service above 60°C internal or external temperature.
- 4 Continuous service up to 60°C internal or external temperature, where provision for pressure de-rating appropriate to the temperature has not been made.
- 5 BLUELINE should be protected in service from exposure to direct sunlight.

* Suitability for conveying a wide range of chemicals is tabulated in the Iplex Pipelines' POLIPEX Polyethylene Pipe Design Textbook and also in our publication, 'A Guide to Chemical Resistance of Thermoplastics and Elastomeric Materials'.

Sizing and Pressure Rating

BLUELINE			
NOMINAL BORE ID (mm)	MEAN BORE ID (mm)	PIPE OD (mm)	CLASS (BAR)
15	16.10	20	12.5
20	20.10	25	12.5
25	25.9	32	12.5
32	32.5	40	12.5
40	40.5	50	12.5
50	51.0	63	12.5

Pipe manufactured and tested to AS/NZS 4130 : 1997
Fittings manufactured and tested to AS/1450 : 1989

Blue Pipelines, the data on other Iplex Pipe Systems is not presented here. Please contact us for further information.

