



Case Study

Sewer Rising Main Eltham to Hawera Pipeline

Apollo PVC-O out performs the cyclic fatigue and surge environment.

Almost a decade had passed before South Taranaki District Council's Eltham to Hawera pipeline was constructed by a Taranaki based construction company, since its conception. The 200mm, 10500m Rising Sewer Main conveys Eltham's Waste Water from their treatment ponds delivering it to Hawera's Western Trunk Sewer main in a single pipeline.

The designer performed an in-depth study on suitable pipeline materials eventually selecting Bi-Axially Oriented PVC (PVC-O) pipe. PVC-O "stood out" as the preferred material of choice meeting the projects durability performance requirements, including the cyclic fatigue and surge environment.

The installation crews described Apollo to be "extremely easy to handle", this resulted in less construction equipment used to install the pipeline. The 6m pipes were light enough to be placed into the trench by hand. Other heavier thermoplastic pipes would have required mechanical assistance to install the pipes.

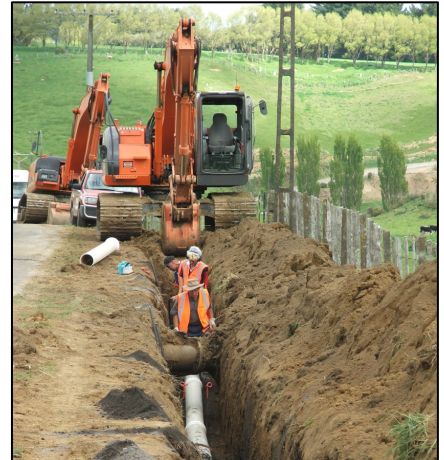
Apollo's Blueseal™ factory fitted seal ring system allowed the contractor to employ fast-lay methods. The locked-in seal ring provided confidence to the contractor and removed all risk of seal ring dislodgment during construction. This feature assisted the contractor to install in excess of 200 metre's of pipe most days.

The pipeline installation took place during 2009.

Contractor;	Hurlestone Earthmoving Ltd.
Council;	South Taranaki District Council.
Design Consultant;	Beca, New Plymouth.

Iplex Pipelines NZ Ltd Technical Services Contacts

Frank O'Callaghan	Mobile 027 495 4523
Todd Randell	Mobile 027 211 4838
Iain McNaught	Mobile 027 243 3000



Apollo's PVC-O pipes being installed



DN200 Series 1 Apollo PVC-O pipes.



Side compaction of the pipes side support zone being performed during construction.

IPLEX
Pipelines